



External
&
Ring Fixator



Bring Back To Action With 'SKY'

Aesculap Type External Fixator For H. / T. / F.

Aesculap Type External Fixator For R. / U.

A.o. Type External Fixator For H. / T. / F.

A.o. Type External Fixator For R. / U. / M.

Jess Type External Fixator

Pins & Screws For External Fixator

Ring Fixator (ilizarov)



AESCULAP TYPE EXTERNAL FIXATOR FOR H. / T. / F.



Aesculap Clamp 4.5mm x 8mm

Cat. No. : 301.01



Connecting Tube 8mm

Size : 6", 8", 10", 12", 14", 16", 18"

Cat. No. : 301.03 to 301.09



Rod To Rod Clamp 8mm x 8mm

Cat. No. : 301.02



Box Spanner 10mm

Cat. No. : 301.10

AESCULAP TYPE EXTERNAL FIXATOR FOR R. / U.



Aesculap Clamp 2.5mm x 4mm

Cat. No. : 302.01



Connecting Rods 4mm

Size : 6", 8", 10", 12"

Cat. No. : 302.03 to 302.06



Aesculap Clamp 4mm x 4mm

Cat. No. : 302.02



Box Spanner 8mm

Cat. No. : 302.07



Distractor Rod

Size : 8", 10", 12"

Cat. No. : 302.0908 to 302.0912

A.O. TYPE EXTERNAL FIXATOR FOR H. / T. / F.



A. O. Type Clamp (Single Pin) 4.5mm x 11mm

Cat. No. : 303.01



Connecting Tube 11mm

Size : 6", 8", 10", 12", 14", 16", 18"

Cat. No. : 303.06 to 303.10-15-16



A. O. Type Double Pin Clamp 4.5mm x 11mm

Cat. No. : 303.02



Threaded Assembly With Tubes & Nuts

Cat. No. : 303.11



Tube to Tube Clamp 11 x 11mm

Cat. No. : 303.03



"T" Handle For Schanz Screws / Steinman Pin

Cat. No. : 303.12



A.O. Joint For Two Rod 11 x 11mm

Cat. No. : 303.04



Triple Trocar

Cat. No. : 303.13



Transverse Pin Adjusting Clamp

Cat. No. : 303.05



Box Spanner 11mm

Cat. No. : 303.14

A.O. TYPE EXTERNAL FIXATOR FOR R. / U. / M.



A. O. Type Clamp 2.5mm x 4mm

Cat. No/ : 304.01



Box Spanner 8mm

Cat. No. : 302.07



Connecting Rods 4mm

Size : 6", 8", 10", 12"

Cat. No. 302.03 to 302.06



Distractor Rod

Size : 8", 10", 12"

Cat. No. : 302.0908 to 302.0912



A. O. Type clamp 4mm x 4mm

Cat. No. : 304.02

JESS TYPE EXTERNAL FIXATOR



Jess Clamp

Size : 2mm x 2.5mm
2.5mm x 3mm
3mm x 4mm

Cat. No. : 305.01 to 305.03

L & Key

Size : small, Medium, Large
Cat. No. : 305.11s-m-l



Jess Rod With Serration

Size : 2.5mm x 6" to 12"
3mm x 6" to 12"
4mm x 6" to 12"
(Variation - 2")

Cat. No. : 305.046 to 305.0612

Metacarpel Distractor

Cat. No. : 305.13



Jess Distractor

Size : 2.5mm x 4"
3.5mm x 6"
3.5mm x 8"
4.5mm x 8"

Cat. No. : 305.07 to 305.10

Finger Distractor

Cat. No. : 305.12



PINS & SCREWS FOR EXTERNAL FIXATOR



Steinman Pin 9" Long

Dia. : 3mm, 3.5mm, 4mm, 4.5mm & 5mm
 Cat. No. : 221.30 to 221.50



Schanz Pin

Length : 4", 5", 6", 8", 9",
 Dia. : 3mm, 3.5mm, 4mm, 4.5mm & 5mm
 Cat. No. : 223.204 to 223.459



Denham Pin

Dia. : 3mm, 3.5mm, 4mm, 4.5mm & 5mm
 Cat. No. : 222.30 to 222.50



Cancellous Schanz Pin

Length : 7" & 9",
 Dia. : 6.5mm
 Cat. No. : 224.07-09

RING FIXATOR (ILIZAROV)



Half Ring

Size : 100, 120, 140, 150, 160, 180, 200, 220mm
 Cat. No. : 308.100 to 308.220



Italian Femoral Arches

Angle : 90°, 120°,
 Size : Small Large
 Cat. No. : 311.90S/L - 120S/L



5/8 Ring

Size : 140mm to 200mm
 Variation : 20mm
 Cat. No. : 310.140 to 310.200



Threaded Rod

Size : 50mm to 400mm
 Variation : 25mm
 Cat. No. : 312.050 to 312.400



Tension K. Wire 16" (Trocker & Byonet Point)

Dia. : 1.5mm & 1.8mm
 Cat. No. : 321.15T-B / 321.18T-B



Olive Wire 16"

Dia. : 1.5mm & 1.8mm
 Cat. No. : 322.15-18

RING FIXATOR (ILIZAROV)



Connecting Bolt

Cat. No. : 319.01



Twisted Plate

Length : 1 Hole to 3 Hole

Variation : 1 Hole

Cat. No. : 318T.01 to 318T.03



Nut

Cat. No. : 319.02



Wire Fixtion Bolt (Center Hole)

Cat. No. : 319.04



Wire Fixation Bolt (Side Slotted)

Cat. No. : 319.03



Schanz Pin Fixation Bolt

Cat. No. : 319.05



Hinges (Male and Female) 1 Hole & 90° Hinges

Cat. No. : 314.01 to 314.03



Wrencho Cube

Size : 1 Hole to 3 Hole

Variation : 1 Hole

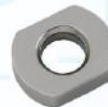
Cat. No. : 319.06 to 319.08



Post Male & Female

Length : 1 Hole to 4 Hole

Cat. No. : 315M-F.01 to 315M-F.04



Flat Sided Washer

Cat. No. : 309



Oblique Support

Cat. No. : 316



Sloted Washer

Cat. No. : 320



Curved Plate

Cat. No. : 317



Cut Washer

Cat. No. : 323



Connecting Plate

Length : 3 Hole to 6 Hole

Variation : 1 Hole

Cat. No. : 318.3 to 318.6



Dynamic Wire Tensioners(S.S.)

Cat. No. : 324.02



Email: skysurgicals50@yahoo.in / office@skysurgicals.com
Web.: www.skysurgicals.com